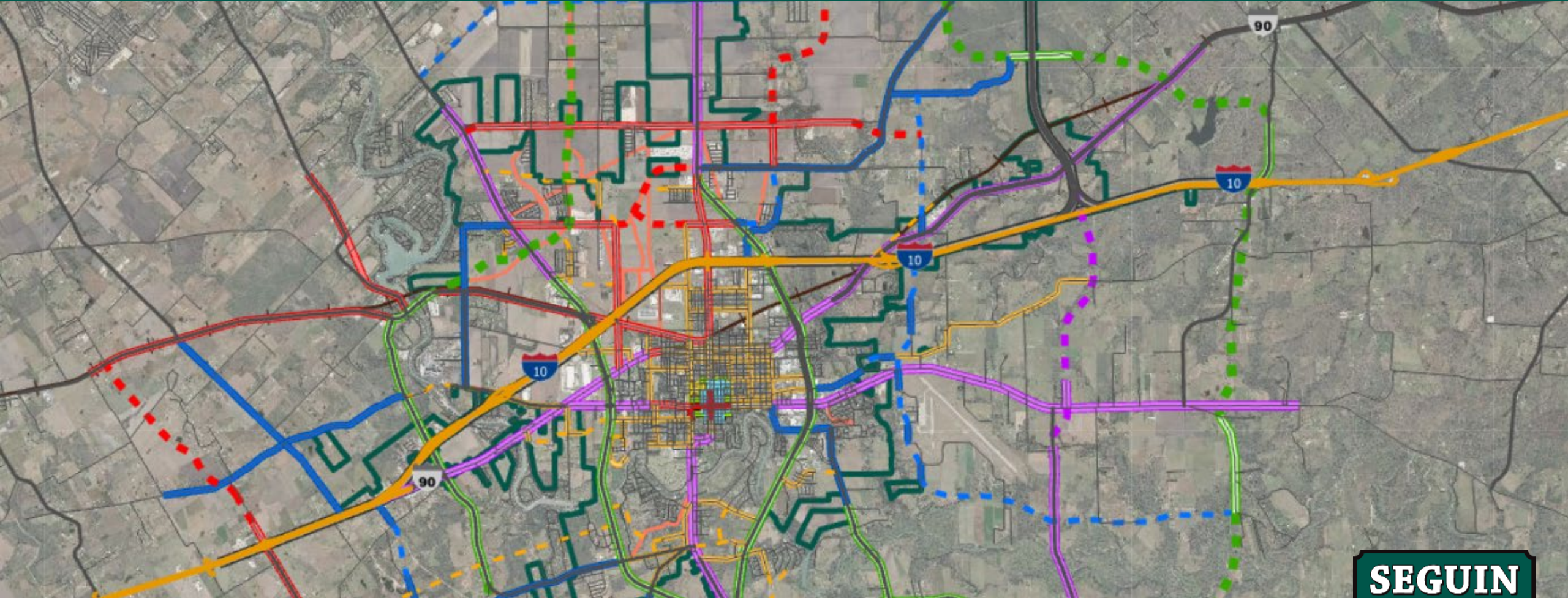


# Regional Growth & Transportation – City of Seguin

Steve Parker – City Manager for the City of Seguin



**SEGUIN**  
TEXAS

It's real.



PRE- Steve Parker 2019



**SEGUIN**  
TEXAS

It's real.



# POST-Steve Parker 2023

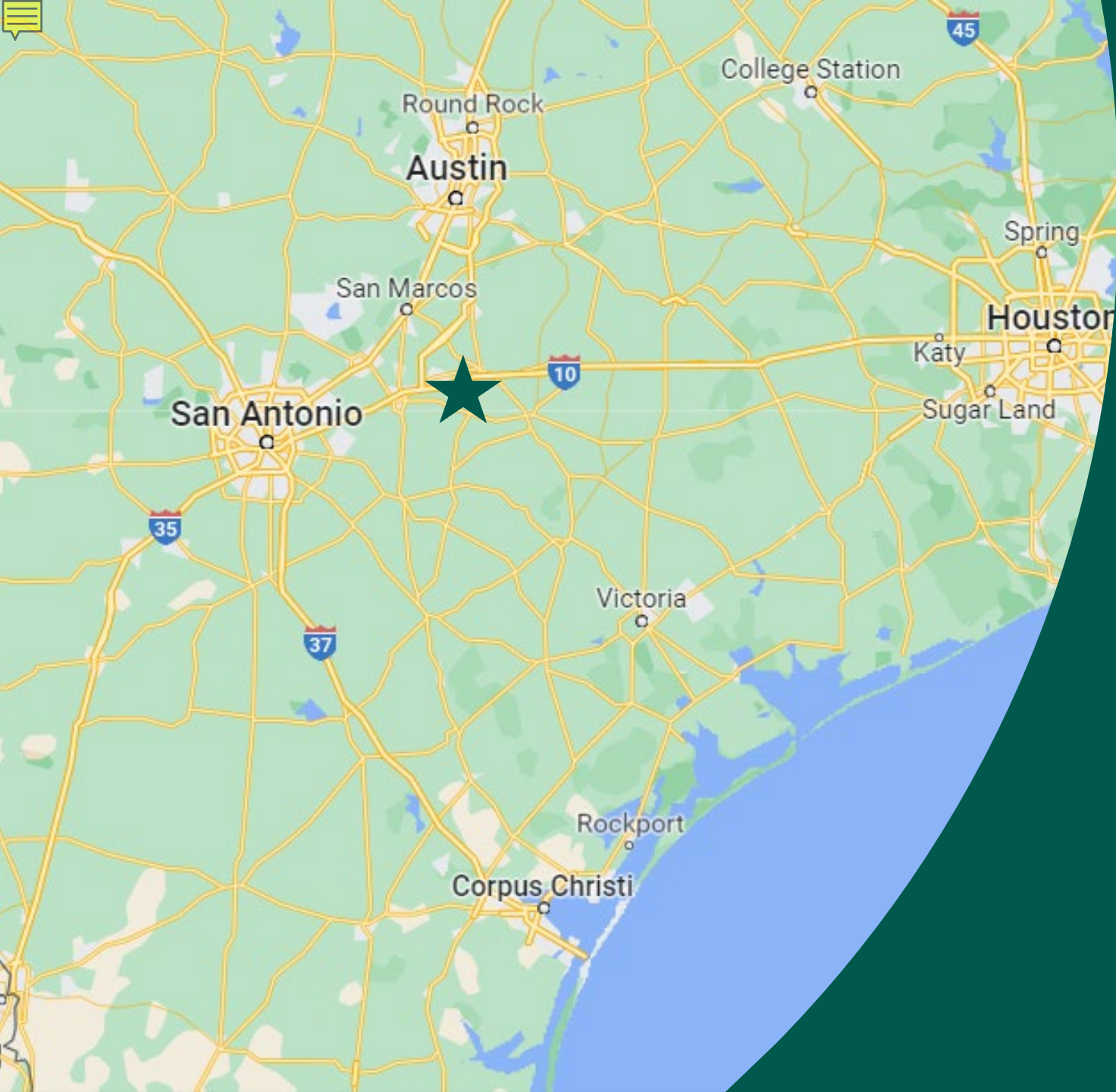


**SEGUIN**  
TEXAS

It's real.



# Seguin Texas



- Location
  - Proximity to major roadways allows prime access to 3 major metropolitan areas
- Growth in population and footprint
- Primary employers
  - Manufacturing
  - Guadalupe Regional Medical Center
  - Texas Lutheran University







# Planning for Growth



Unified Development Code



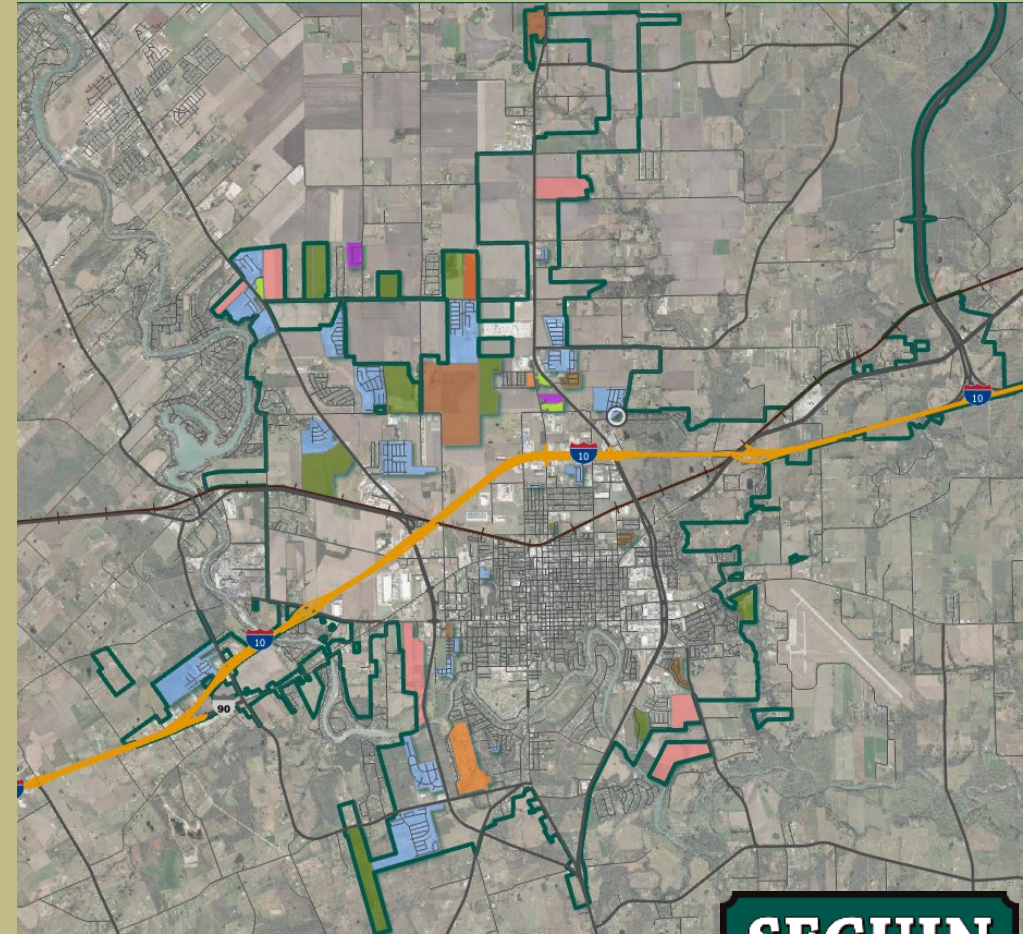
Technical Manual



Comprehensive Plan



Master Transportation Plan  
*Master Thoroughfare Plan*  
*Master Trails Plan*



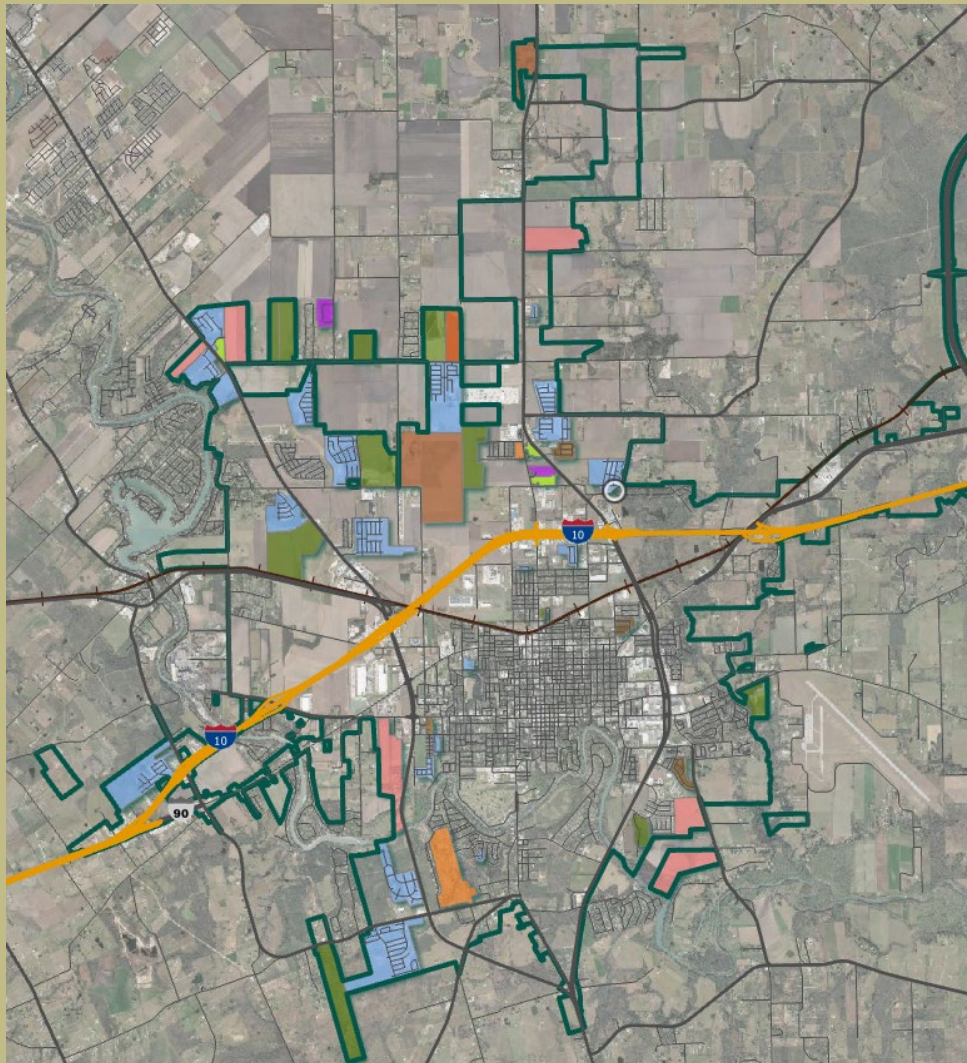
- *52 New Subdivisions in Development*
- *15,150 new dwelling units proposed*



**It's real.**



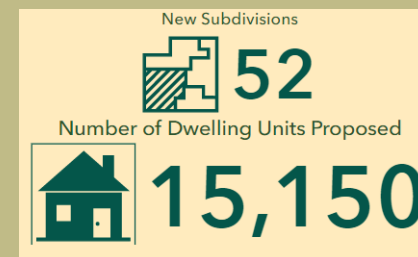
# Growth & Development



## Proposed Housing Dashboard

Information on the Subdivision Development throughout the City of Seguin, TX.

Year	Population*
2000	23,683
2010	25,175
2020	29,433



It's real.







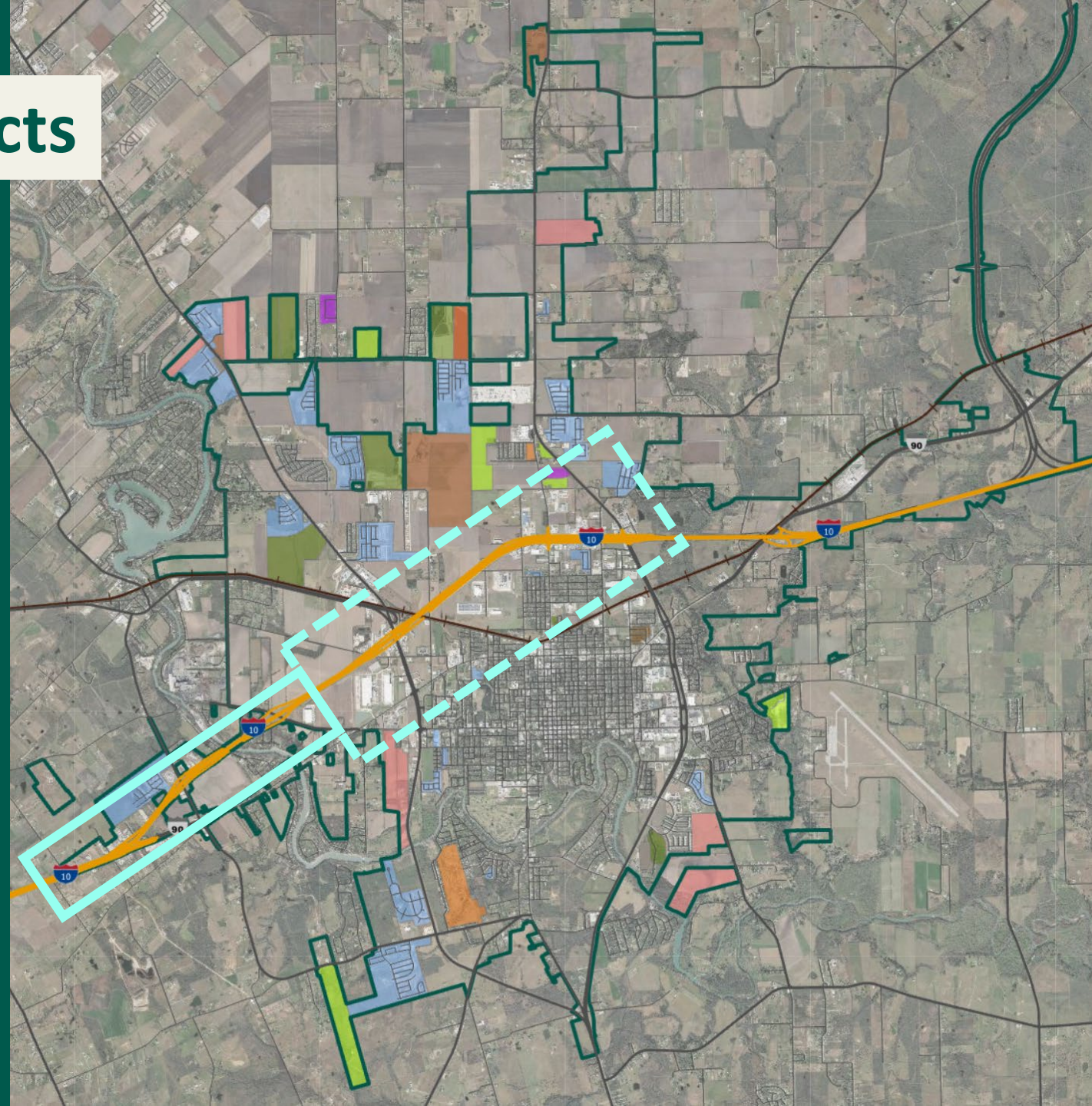
# TxDOT Projects

- IH-10
- FM 78
- FM 466
- SH 123
- SH 46



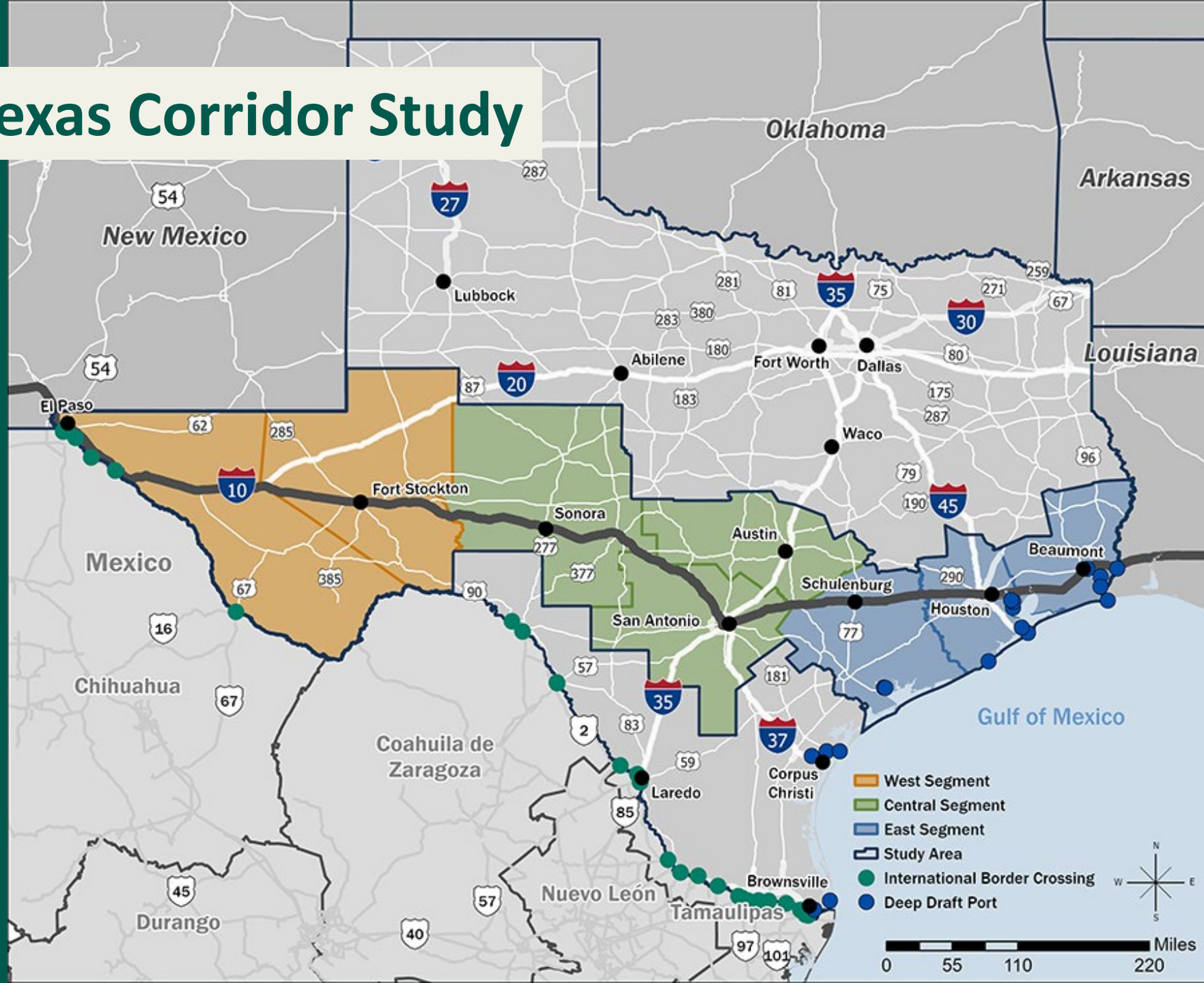
It's real.

# IH-10 Projects



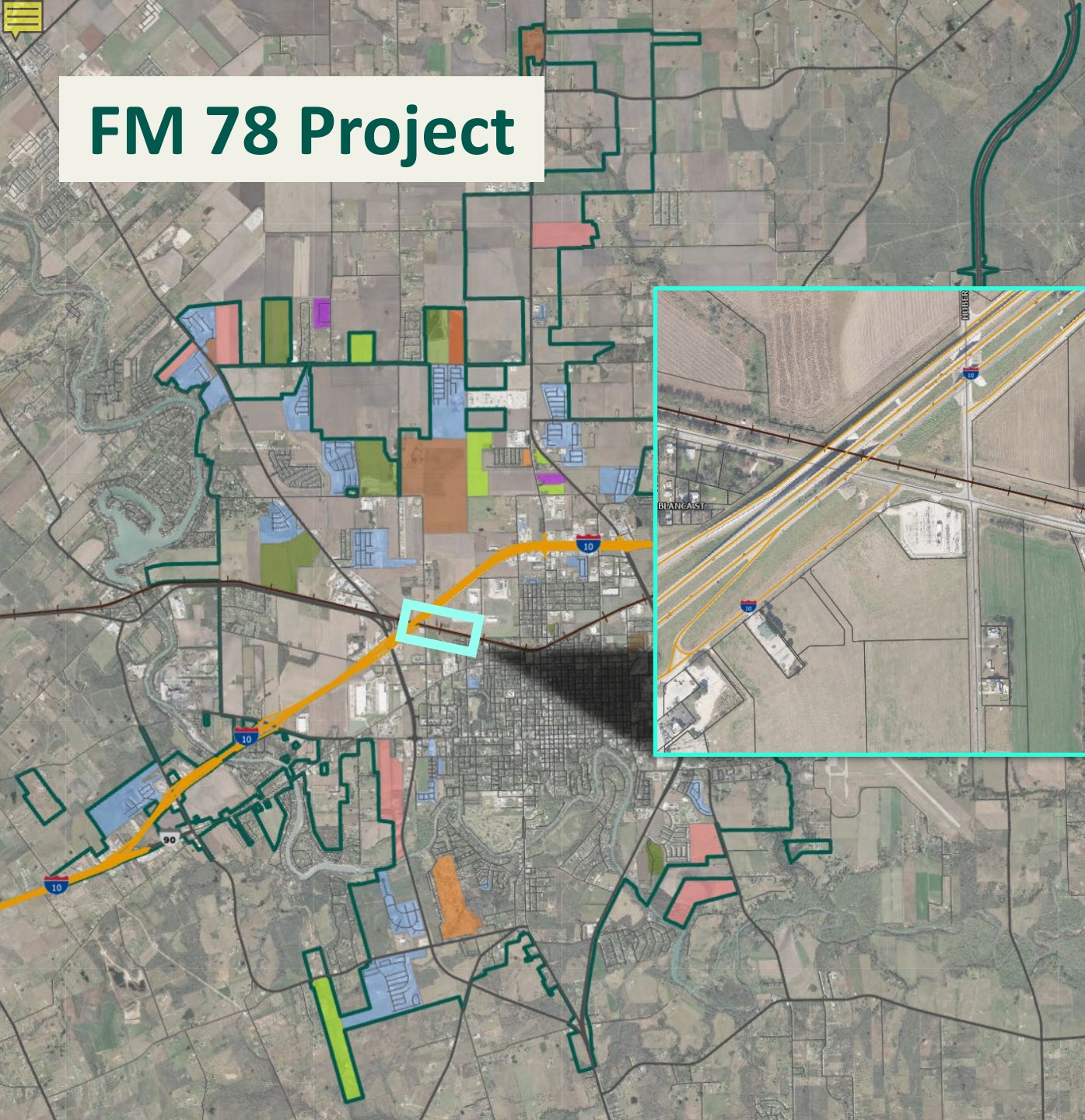


# IH-10 Texas Corridor Study





# FM 78 Project





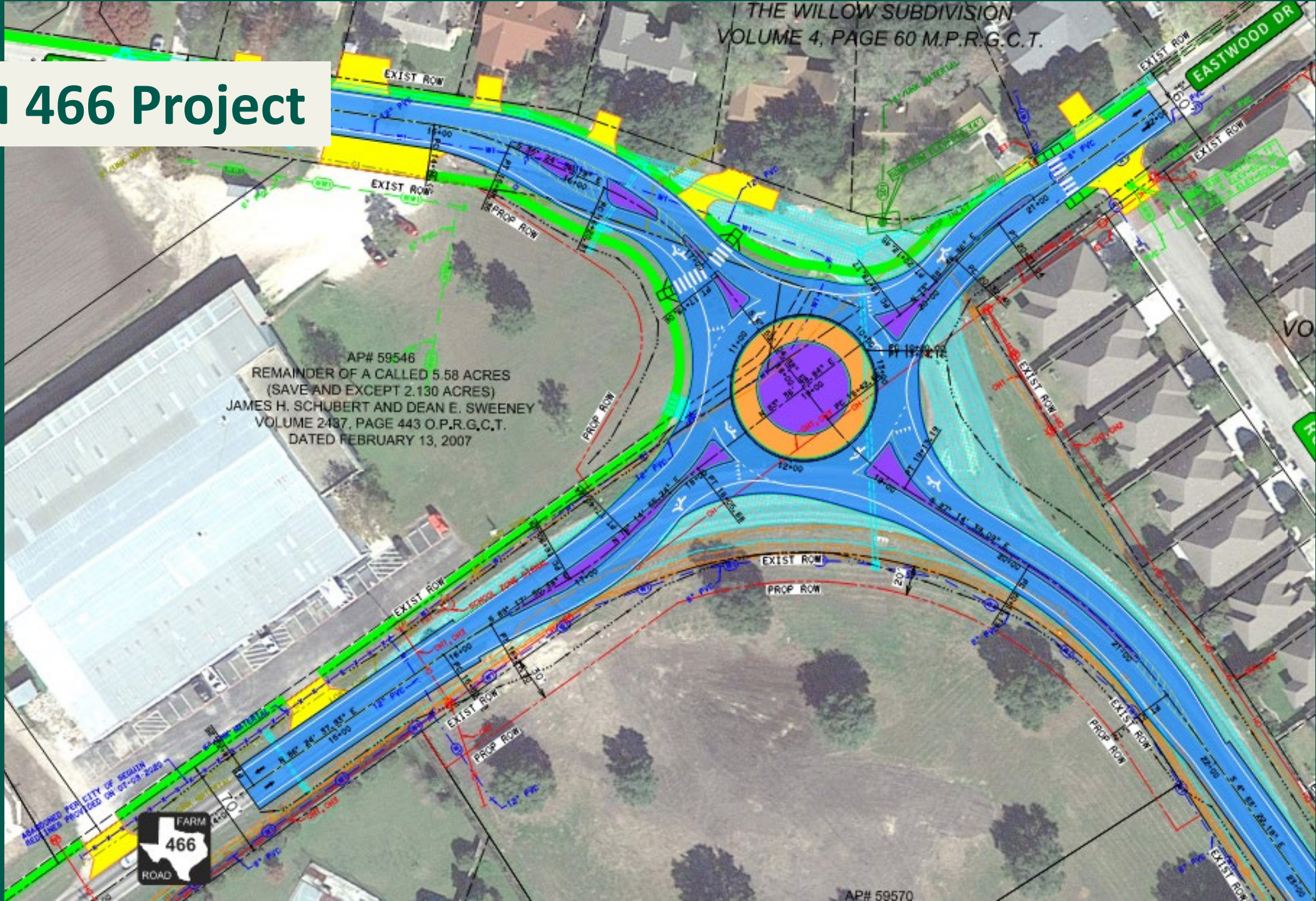
# FM 466 Project

THE WILLOW SUBDIVISION  
VOLUME 4, PAGE 60 M.P.R.G.C.T.

AP# 59546  
REMAINDER OF A CALLED 5.58 ACRES  
(SAVE AND EXCEPT 2.130 ACRES)  
JAMES H. SCHUBERT AND DEAN E. SWEENEY  
VOLUME 2437, PAGE 443 O.P.R.G.C.T.  
DATED FEBRUARY 13, 2007

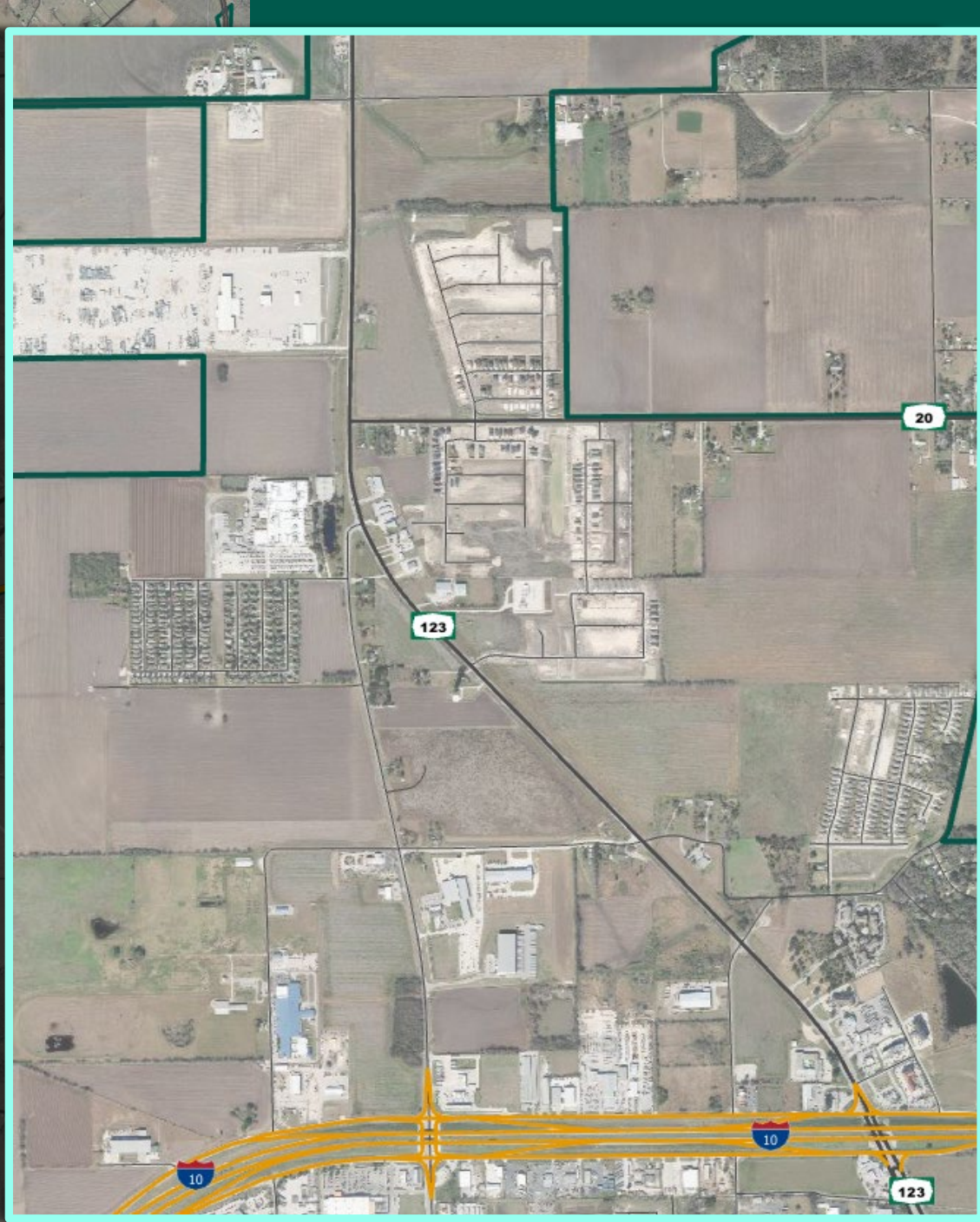
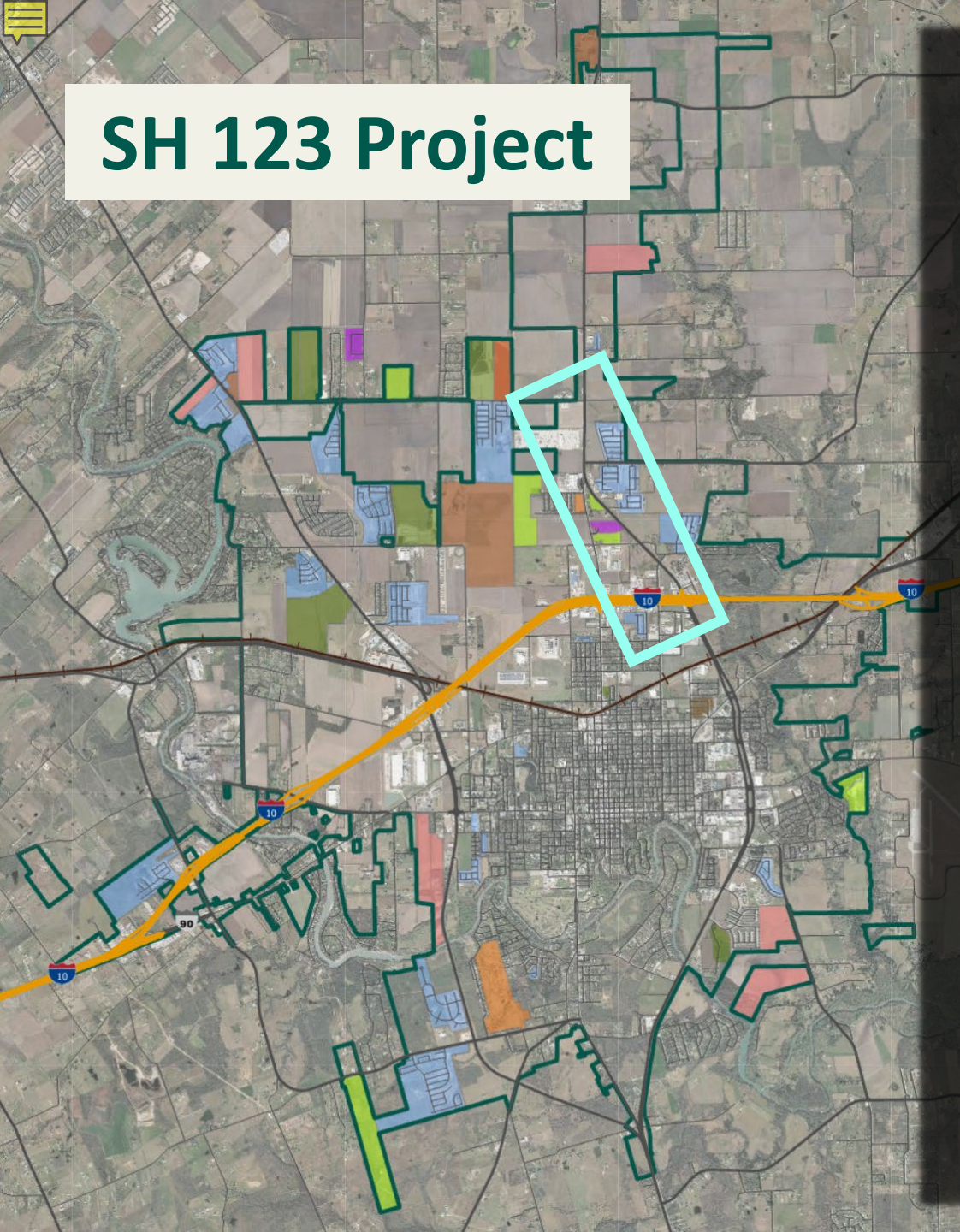


AP# 59570



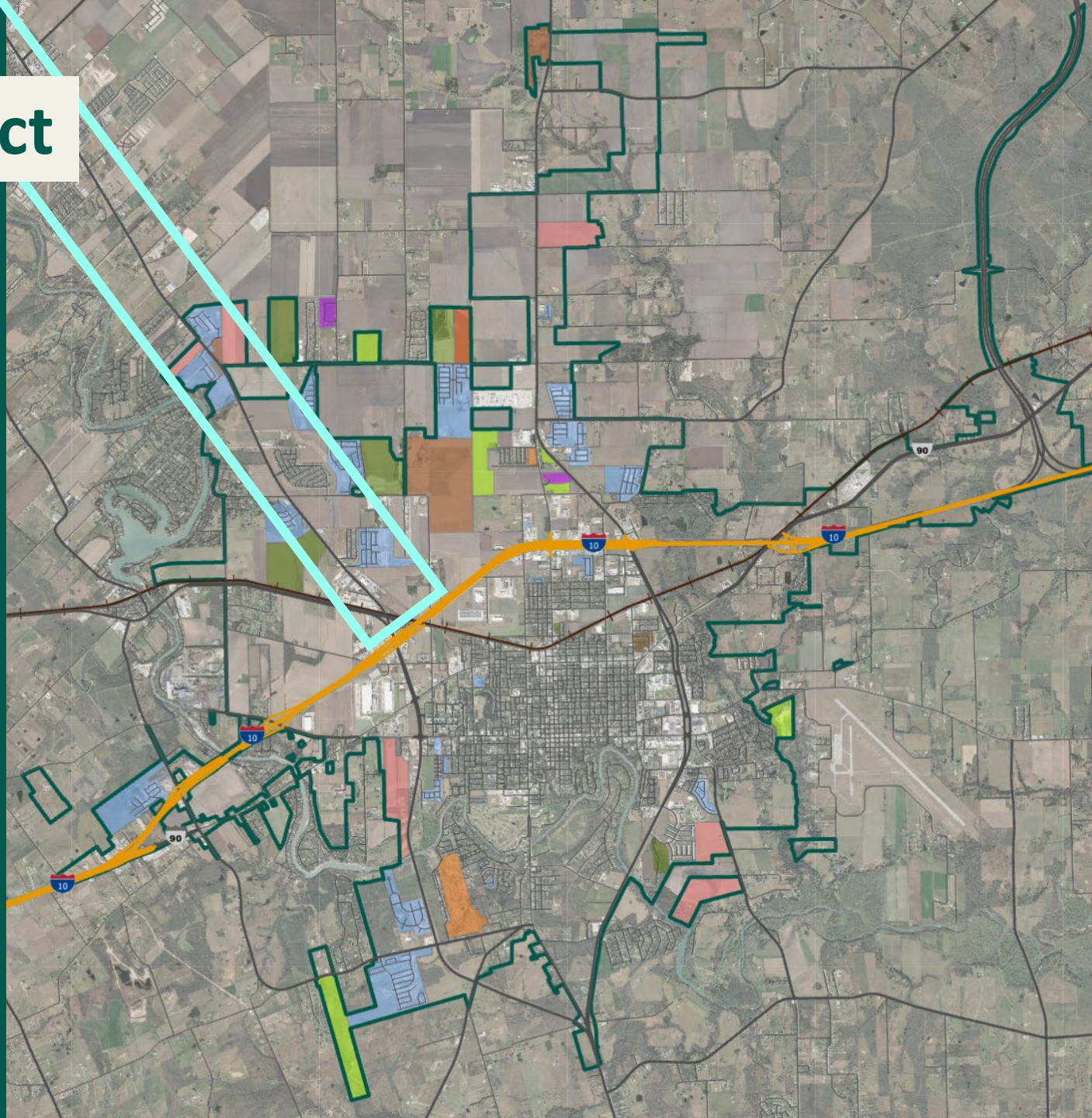


# SH 123 Project





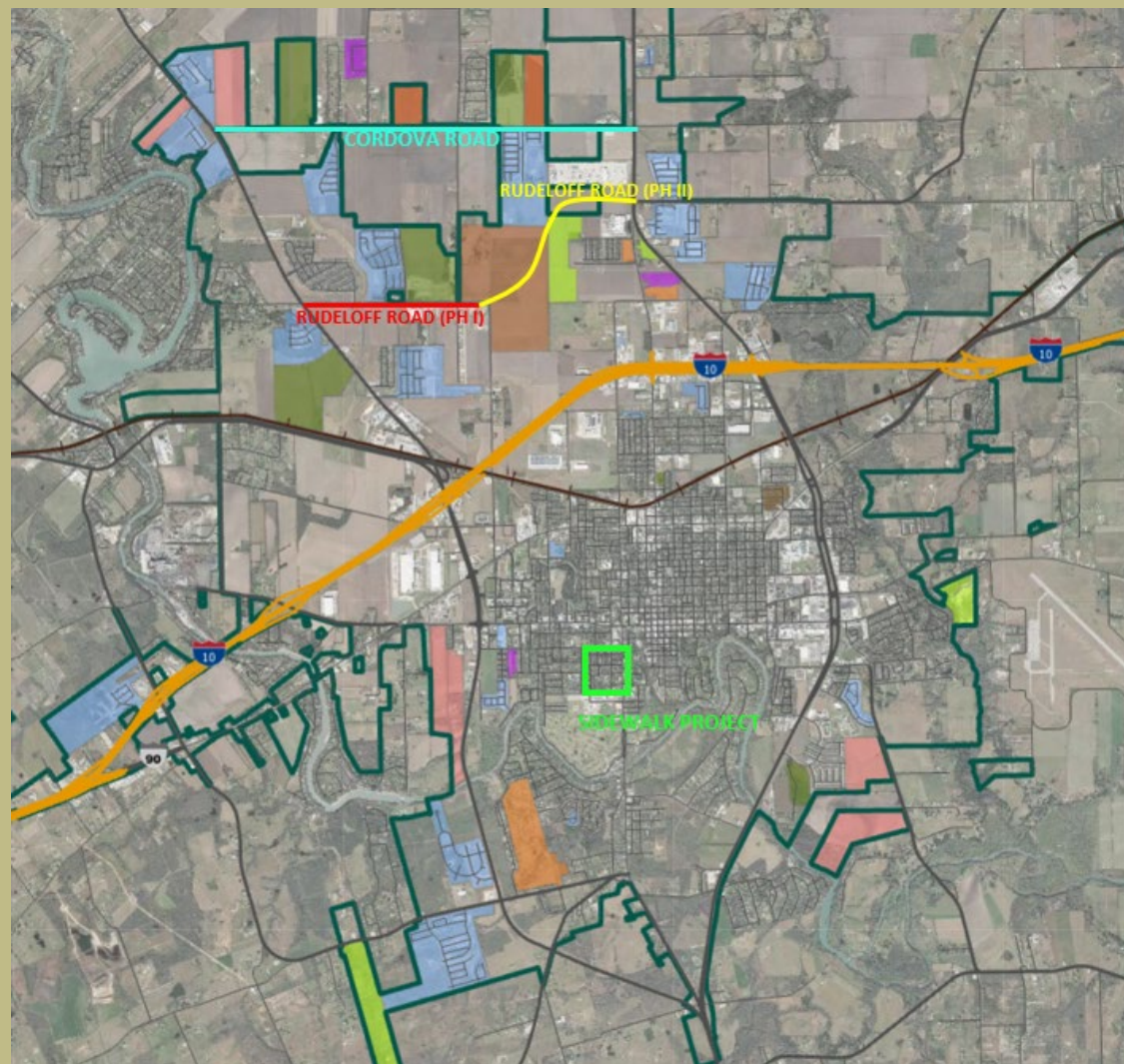
# SH 46 Project





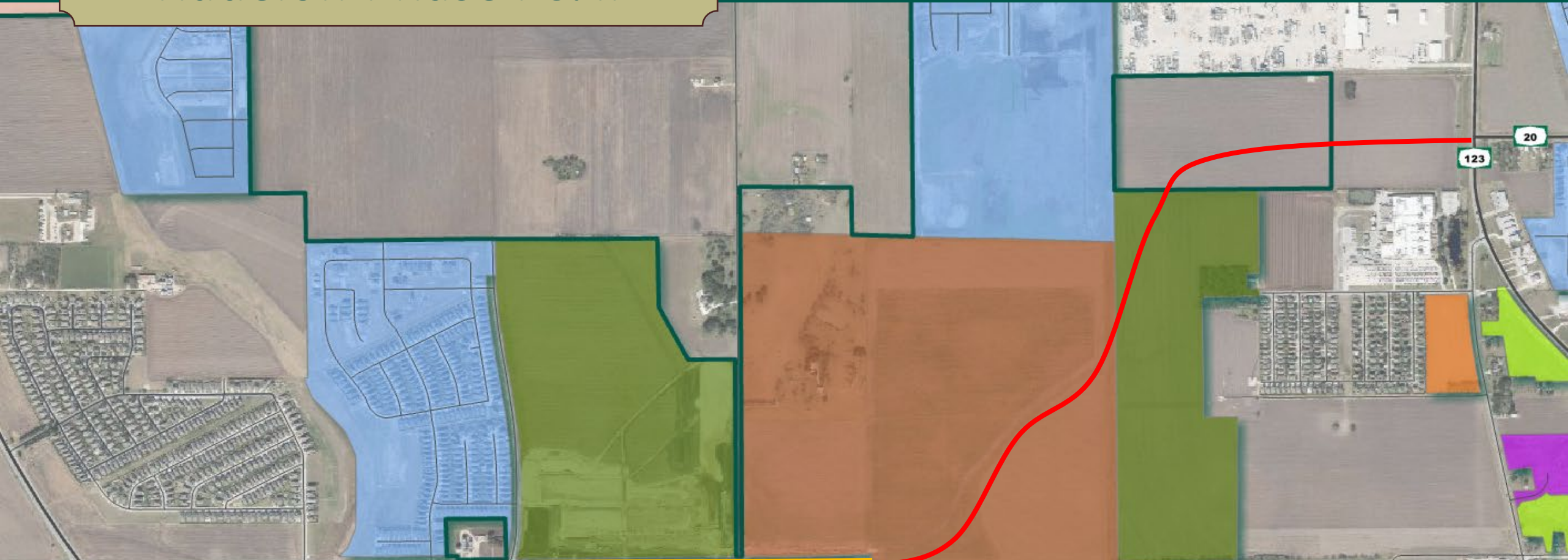
# Current Alamo Area MPO Projects Underway

- Rudeloff Road Phase I (SH 46 to Huber)
  - Construction starting in May
- Rudeloff Road Phase II (Huber East to SH 123)
  - In Design
- Cordova (SH 46 to SH 123)
  - In Design
- Stratton, Jefferson, Guadalupe, Nelda Sidewalk Project





# Rudeloff Phase I & II



## Rudeloff Phase 1 Timeline

AFA Fully Executed	October 2017
Design Kick-off	January 2018
ROW Acquisition	August 2019 – May 2022
100% PS&E and Bid Schedule to TxDOT	June 2022
TxDOT Notice to Proceed	November 2022
Letting ( <i>Tentative</i> )	March/April 2023

## Rudeloff Phase 2 Timeline

AFA Fully Executed	March 2021
Design Kick-off	January 2022
ROW Acquisition	Mid 2024
100% PS&E and Bid Schedule to TxDOT	Late 2024/Early 2025
Letting	May 2025

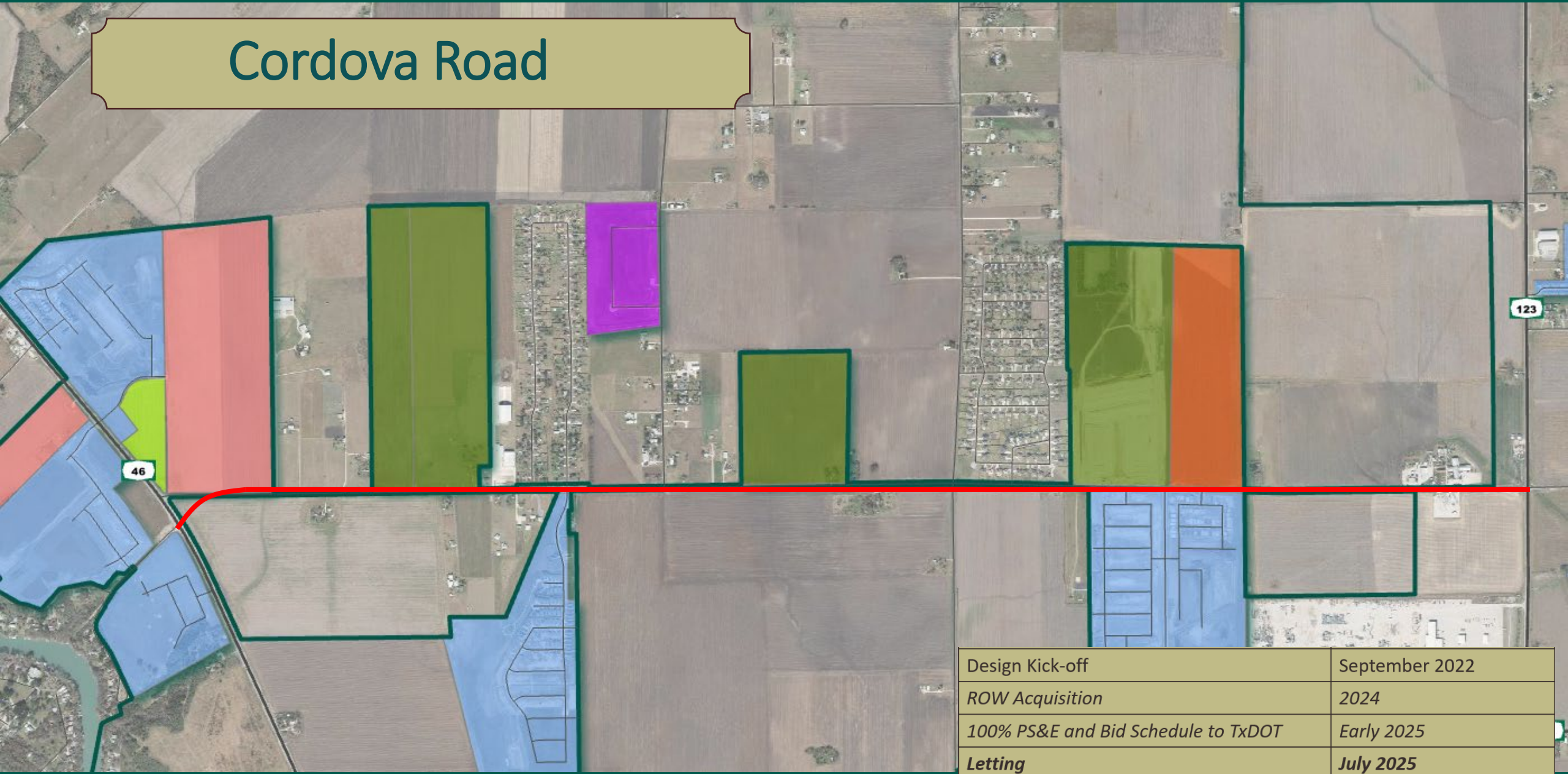


# Rudeloff - Current State





# Cordova Road



Design Kick-off	September 2022
ROW Acquisition	2024
100% PS&E and Bid Schedule to TxDOT	Early 2025
Letting	July 2025

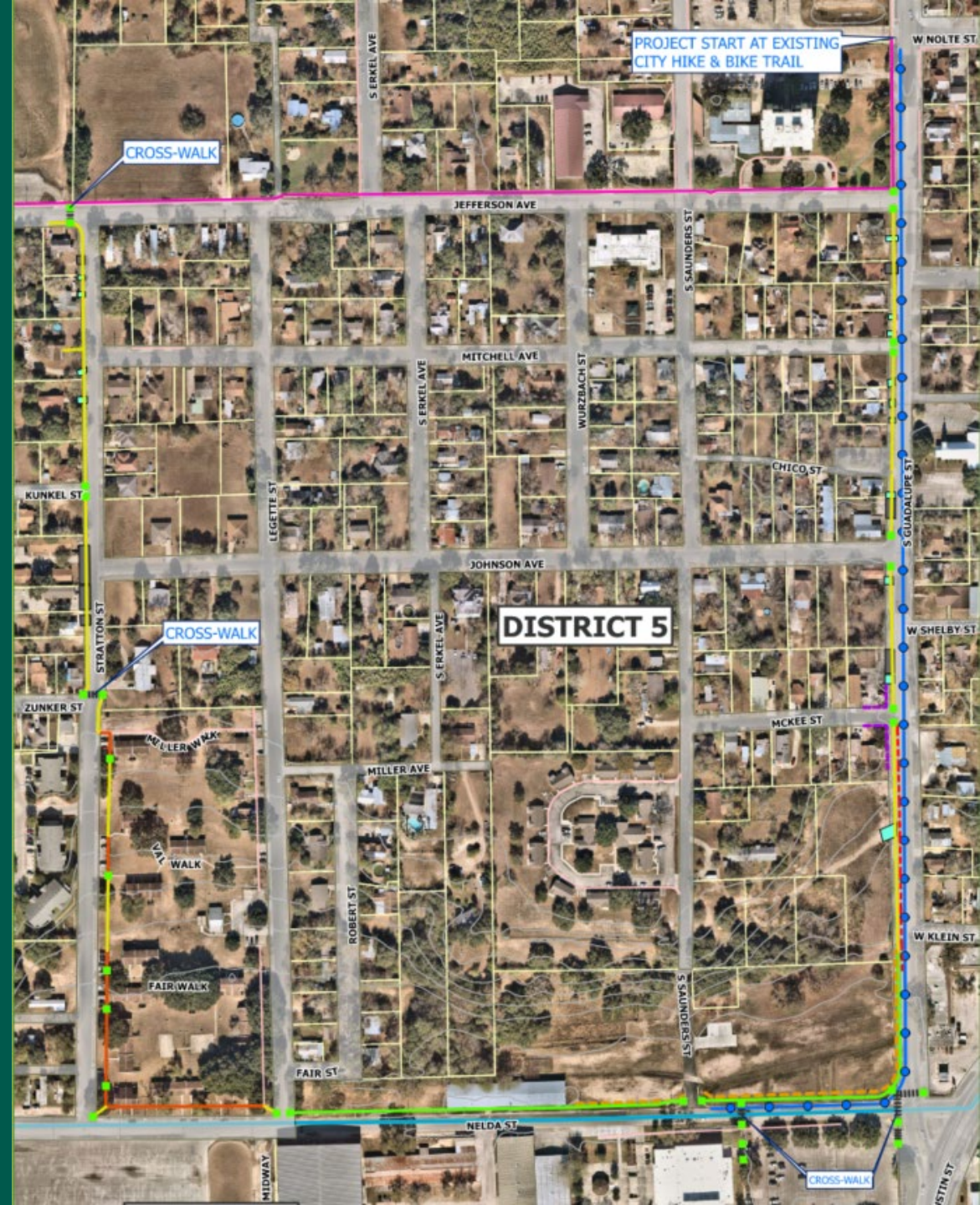
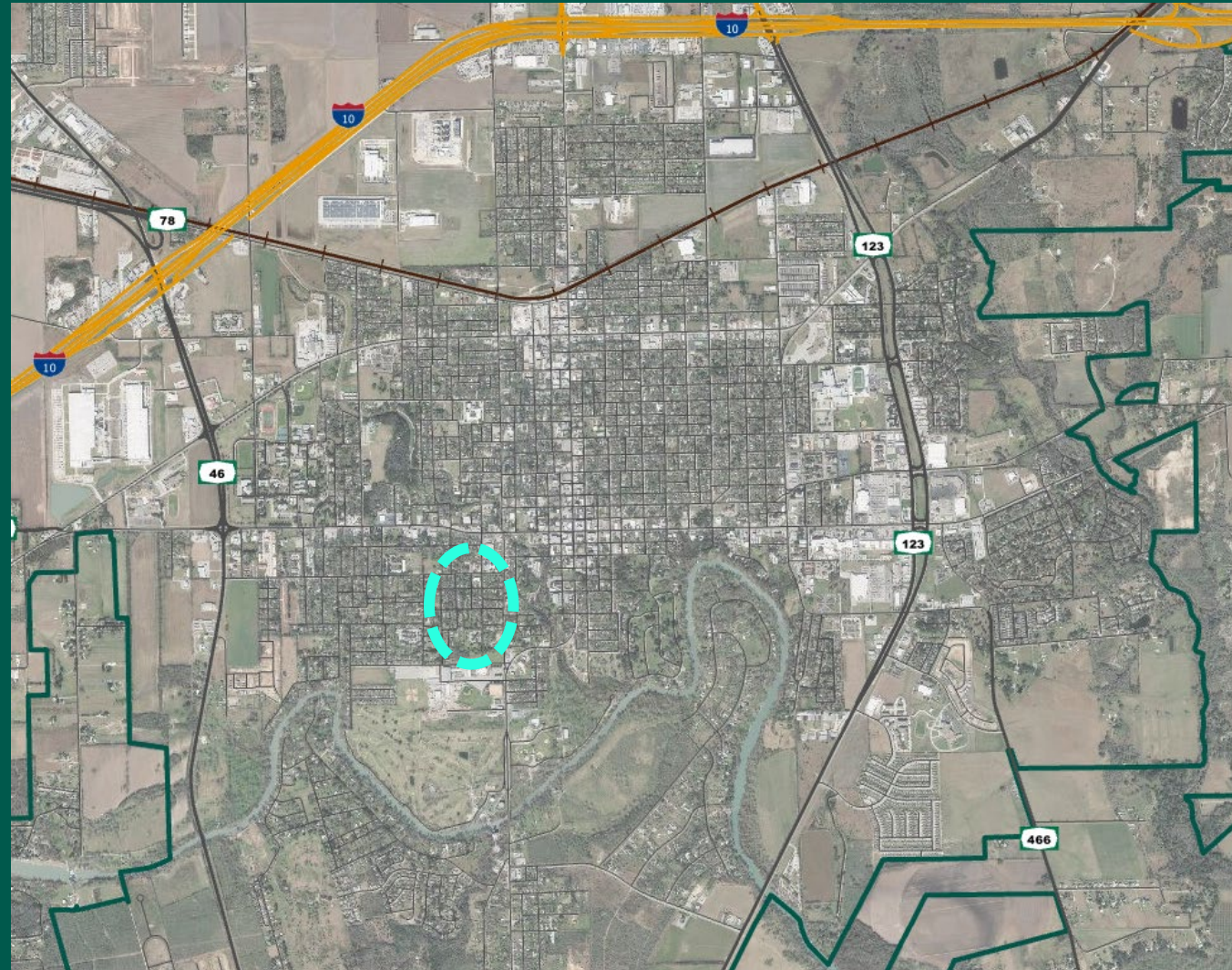




Cordova Rd



# Stratton, Jefferson, Guadalupe, Nelda Sidewalks





# 8<sup>th</sup> Street



- Developed by Seguin EDC
- Road extension project currently under construction



It's real.





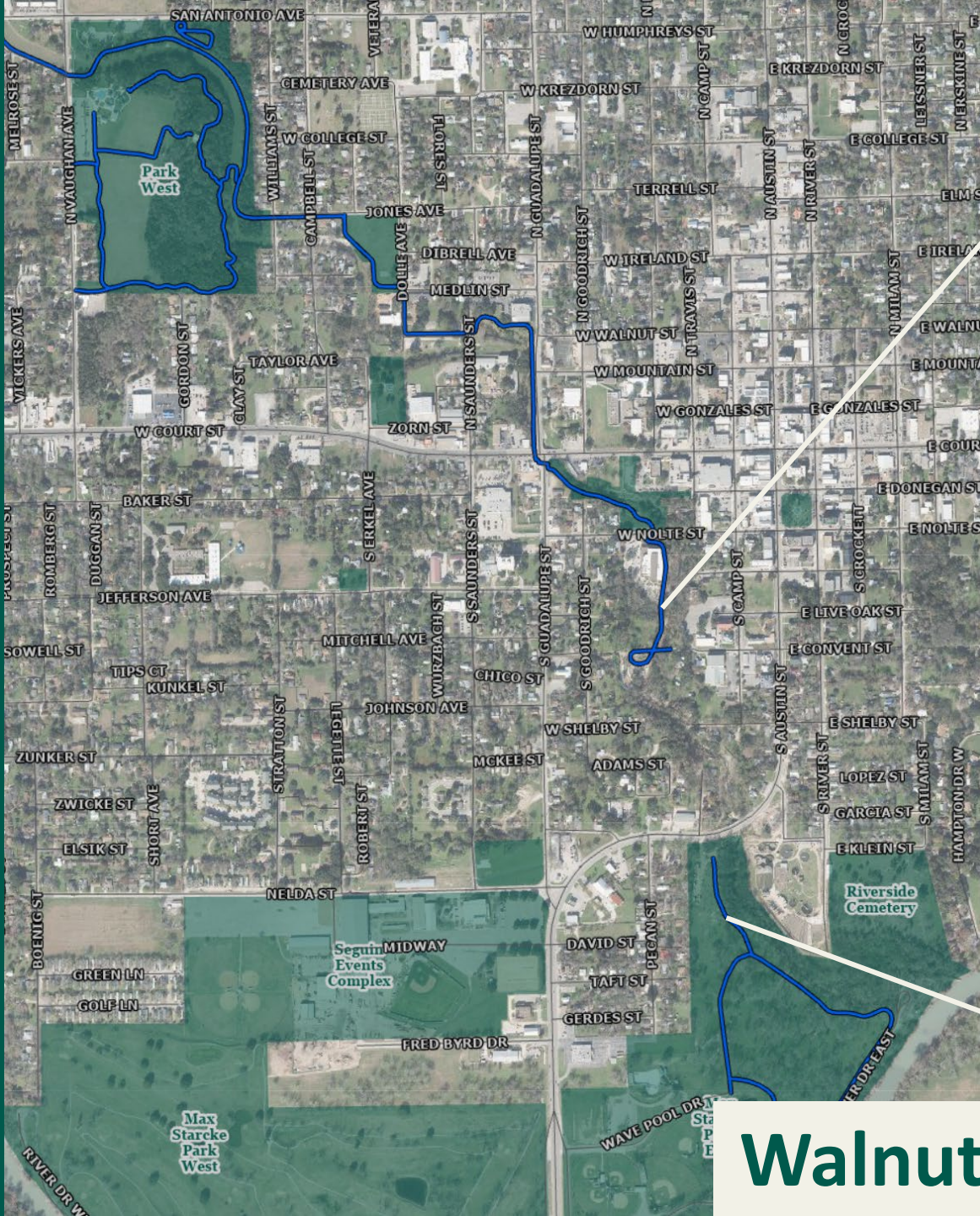




# Walnut Springs Trail Extension

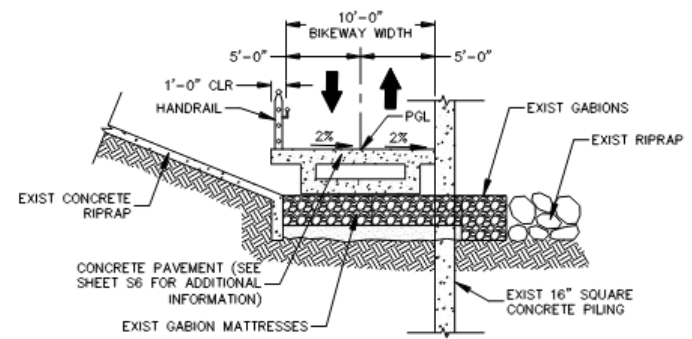






# Walnut Springs Trail Extension Project





WALNUT BRANCH TRAIL - PROP TYP SECTIONS  
NTS





























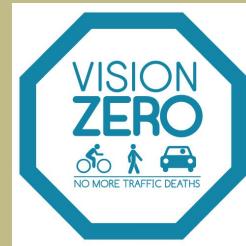






# Looking to the Future

- Regional Trails & Transportation Plan
- Drainage asset collection and mapping
- Drainage Masterplan
- Continued Improvement of Design Standards
- Potential Railroad Quiet Zones
- Safe Streets 4 All - Vision Zero Plan



S | S  
4 | A



It's real.



An aerial photograph of Seguin, Texas, overlaid with a semi-transparent dark grey map. A thick yellow line traces a path through the city, starting from the bottom left, moving north, then east, and finally northeast. Various colored polygons (blue, green, orange, purple, red) are scattered across the map, primarily in the northern and western parts of the city. Major roads are visible, including Interstate 10 (I-10) and State Highway 90 (SH-90).

THANK YOU

**SEGUIN**  
TEXAS

It's real.